



- [MENCAFEP Units and the Organisation](#)
- [MENCAFEP's Work In Batticaloa District](#)
- [Respite Care Cottage For Multiple Disabled Children](#)

[Help a MENCAFEP CHILD](#)



**No matter how little you contribute, it will make a huge difference in these children's lives.**

[Click Here](#)

**A semi annual publication for friends of MENCAFEP**



**Sharing Smiles**

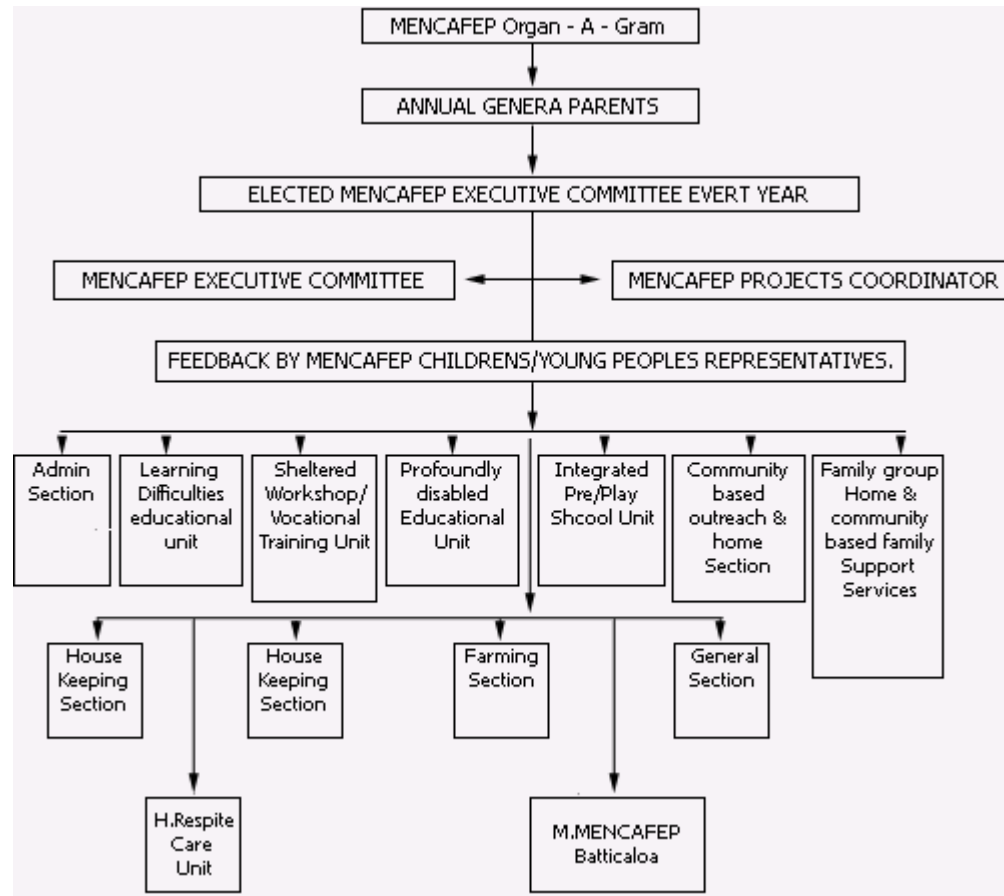
[Click to read](#)

**MENCAFEP Units and the Organisation**

**MENCAFEP - Mentally Handicapped Children & Families Educational Project.**

- Administration Section.
- Learning Difficulties Educational Section.  
(This includes children that are Intellectually Challenged, hearing impaired, non/partially sighted.)  
Number of children: 50.
- Sheltered Workshop/Vocational Training Section.  
Number of young persons: 25
- Profoundly Disabled Educational Section:  
Number of children: 10
- Integrated Pre-school Section:  
Number of children: 27
- Community Based Outreach and Home Visit Section:  
Number of children and young people: 53
- Family Group Homes and Community – Based Family Support Services.  
Number of children and young people: 15
- The disabled person should have an income.
- House Keeping Unit.
- MENCAFEP Farming Section.
- General Unit.

**MENCAFEP Organisational Diagram**



[Download this page](#)



Photographs and Articles by: Chris Stubbs

© Min-X 2005 [www.min-x.biz](http://www.min-x.biz)